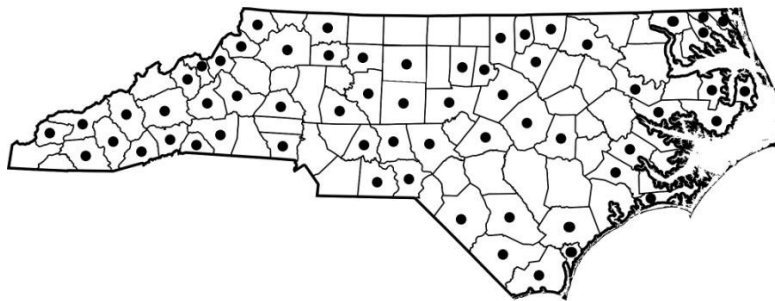


Trametes versicolor (L.) Lloyd

Phylum: Basidiomycota, Order: Polyporales,
Family: Polyporaceae

Macroscopic characters	shape	Sessile; effused-reflexed; dimidiate; often in dense imbricate and fused clusters
	size	Up to 10-12 cm broad x 6 cm long x up to 5 mm thick
	texture	Tough-fibrous
	pileus	Variable in color; strongly zonate with contrasting colors; hirsute to tomentose
	stipe	None
	context	Cream-colored; tough-fibrous; up to 5 mm thick
	pore surface	Cream-colored to cinereous
	pores	Angular to circular; 4-5 per mm
	tube layer(s)	Concolorous; continuous with context; up to 3 mm thick
Microscopic characters	hyphal system	Trimitic; skeletal hyphae thick-walled, aseptate, 4-6 µm in diameter; binding hyphae thick-walled, aseptate, profusely branched, 2-4 µm in diameter
	clamp connections	Contextual generative hyphae thin-walled with clamps
	sterile elements	None
	basidiospores	Cylindric ; slightly curved; hyaline; smooth; 5-6 x 1.5-2 µm
Habitat characters	substrate/host	Dead wood of numerous genera of hardwoods; occasionally on conifers
	seasonality	Annual
	type of decay	White rot of hardwood, rarely conifers
	range	Throughout forest regions of North America; circumglobal species
Notes	Common and widespread in North Carolina and Us referred to as the 'turkey tail" fungus	
References	Gilbertson & Ryvarden, 1987; Grand & Vernia, 2009; Overholts, 1953	



***Trametes versicolor* (L.) Lloyd**



Habit of Basidiocarps



Habit of Basidiocarps



Habit of Basidiocarps



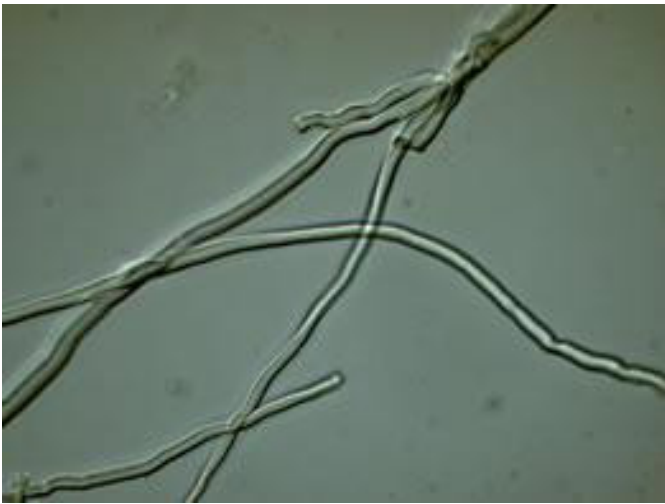
Pore Surface



Basidiospores – 1000 X



Binding Hyphae – 400 X



Skeletal Hyphae – 400 X