

# ***Meripilus sumstinei* (Merrill) M. J. Larsen & Lombard**

Syn: *Meripilus giganteus* (Pers.) P. Karst.

Profile Group: Basidiomycota, Polyporales,  
Meripilaceae

Macroscopic characters	shape	Large; stipitate- pileate; imbricate fanshaped to spathulate
	size	Up to 30 cm broad and long
	texture	Fleshy when fresh; fibrous with age
	pileus	Glabrous; smooth; ochraceous to brown when old
	stipe	Almost absent; short; stout; ochraceous and smooth
	context	Whitish to cork-coloured; lighter than tubes; distinctly fibrous
	pore surface	White to wood-coloured; darkening when touched in fresh condition
	pores	Small and entire; 3-5 per mm
	tube layer(s)	Up to 8 mm deep; concolorous with pore surface
Microscopic characters	hyphal system	Monomitic: generative hyphae hyaline, thickened-walled in context and stipe, unbranched to rarely branched, few septa, 6-14 um wide
	clamp connections	None
	sterile elements	N/A
	basidiospores	Broadly ellipsoid to subglobose; hyaline; smooth; thin-walled
Habitat characters	substrate/host	On the ground close to hardwood stumps, also reported on Douglas fir
	seasonality	Annual
	type of decay	Causes a white rot in dead and living hardwoods
	range	Eastern and Central United States, from New York to Louisiana; circumglobal in the Northern Hemisphere
Notes		
References		Gilbertson & Ryvarden, 1987; Grand & Vernia, 2007; Overholts, 1953



Species distribution in North Carolina

*Meripilus sumstinei*  
Mycological Herbarium NCSU

Last update: 09 March, 2011 by B.R. Cody  
Last review: 11 March, 2011 by L.F. Grand

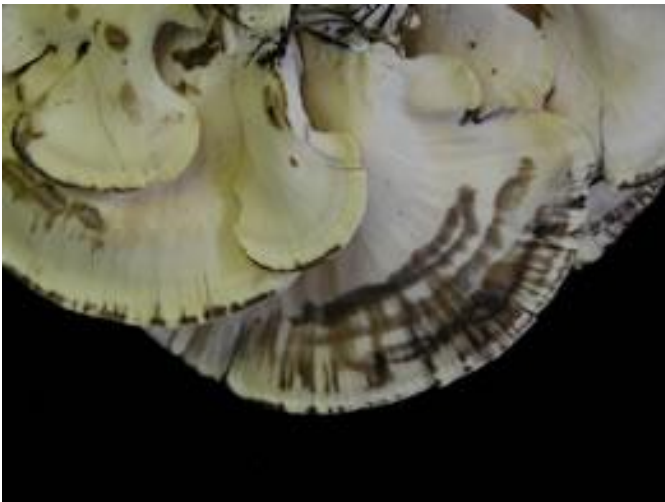
***Meripilus sumstinei* (Merrill) M. J. Larsen & Lombard**



**Habit of Basidiocarps**



**Habit of Basidiocarps**



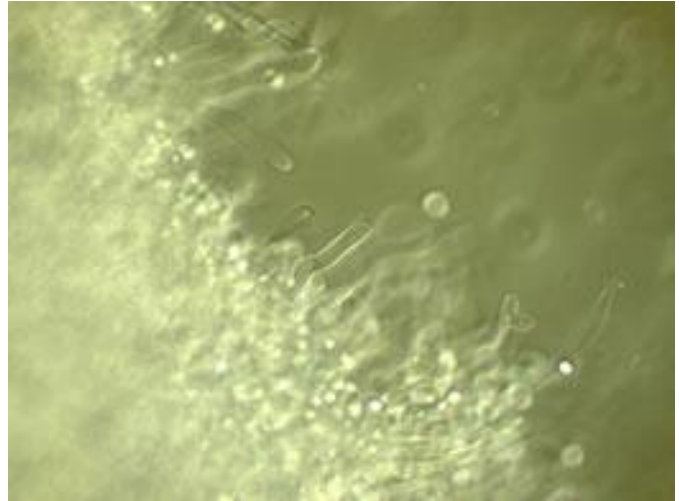
**Pore Surface – Black Bruising Reaction**



**Pore Surface**



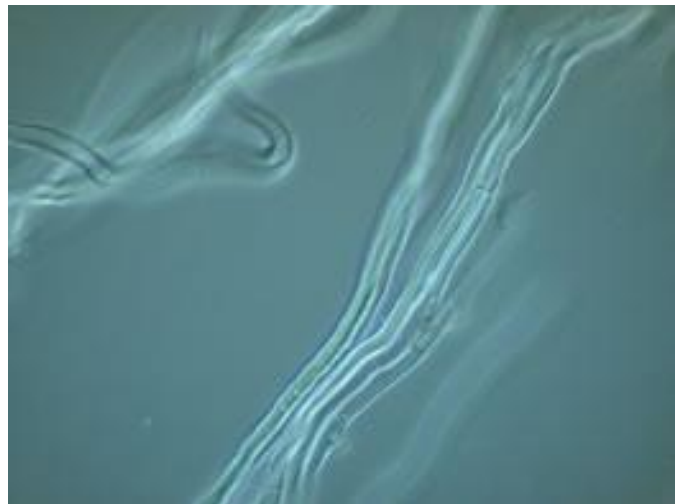
**Basidiospores - 1000 X**



**Fusoid Cystidioles - 1000 X**



**Generative Hyphae - 1000 X**



**Generative Hyphae - 1000 X**