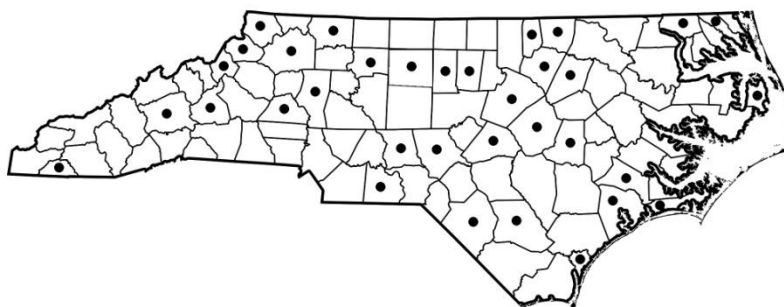


***Ganoderma lucidum* (Curt.) P. Karst.**

Syn:

Profile Group: Basidiomycota, Polyporales,
Ganodermataceae

Macroscopic characters	shape	Applanate; sessile to centrally or laterally stipitate
	size	15 cm or more broad
	texture	Tough, corky to nearly woody
	pileus	Dark reddish brown; varnish-like crust; glabrous; often brown from spore deposit
	stipe	If present with a reddish brown varnish-like crust
	context	Creamy white; becoming dark purple with age; zonate; up to 3cm thick at base
	pore surface	Creamy white; becoming light buff; staining dark purple-brown on bruising
	pores	Circular to angular; 4-5 per mm
	tube layer(s)	Purple-brown; distinct from context; up to 1cm thick
Microscopic characters	hyphal system	Dimitic; generative and skeletal hyphae
	clamp connections	Generative hyphae with clamps
	sterile elements	Pilocystidia thick-walled, clavate
	basidiospores	Ellipsoid; 9-12 x 5.5-8 µm
Habitat characters	substrate/host	Living trees of numerous hardwood genera; continuing fruiting on dead trees and stumps
	seasonality	Annual
	type of decay	White rot and butt rot of living native hardwoods; trees and shrubs
	range	Widely distributed in U.S hardwood forest types; in Southern, Gulf Coast, and Southwest regions
Notes		Considered a species complex awaiting genetic and molecular analysis.
References		Gilbertson & Ryvarden, 1986; Grand & Vernia, 2005A; Overholts, 1953



Species distribution in North Carolina

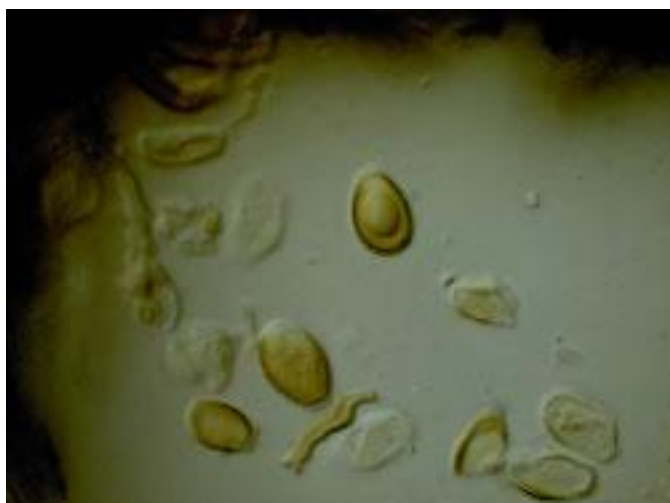
***Ganoderma lucidum* (Curt.) P. Karst.**



Habit of Basidiocarps



Habit of Basidiocarps



Basidiospores – 1000 X



Pilocystidia – 400 X



Skeletal Hyphae – 400 X



Skeletal & Binding Hyphae – 200 X