

***Cryptoporus volvatus* (Peck) Shear**

Syn: *Polyporus volvatus* Peck

Fomes volvatus (Peck) Cooke

Profile Group: Basidiomycota, Polyporales

Macroscopic characters	shape	Ungulate
	size	Up to 4 x 5 x 4 cm
	texture	Glabrous; coated with a clear lacquer-like layer; smooth or rugose
	pileus	Cream-colored; yellowish to tan; azonate; volva-like structure which completely encloses the pore surface except for a small hole at the base
	stipe	N/A
	context	Ivory-white; azonate; soft-corky
	pore surface	Pale to dark chocolate brown
	pores	Circular; 4-5 per mm
	tube layer(s)	Pinkish buff; tubes up to 6 mm long
Microscopic characters	hyphal system	Trimitic
	clamp connections	Generative hyphae with clamps at all septa
	sterile elements	Cystidioles fusoid; with a basal clamp; thin-walled
	basidiospores	Cylindric; hyaline; smooth; 12-15.6 x 4.5 um; pink en masse
Habitat characters	substrate/host	Recently killed conifers; commonly fruiting a year after trees are killed
	seasonality	Annual
	type of decay	Soft grayish-white rot of sapwood
	range	Widely distributed in coniferous forest regions of North America; recently extended into southern pines in North Carolina
Notes		N/A
References		Overholts, 1953; Gilbertson & Ryvarden, 1986. Grand & Vernia, 2002 A, B.



Species distribution in North Carolina

Cryptoporus volvatus (Peck) Shear



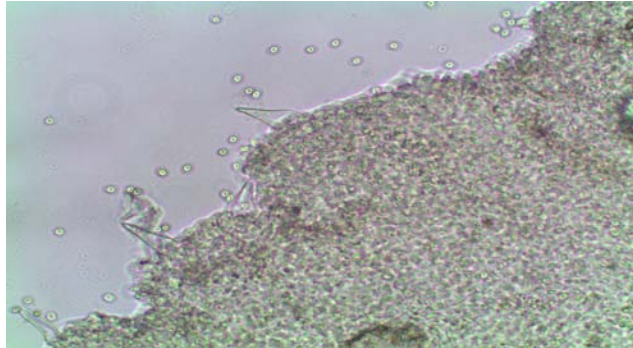
Front view of basidiocarps



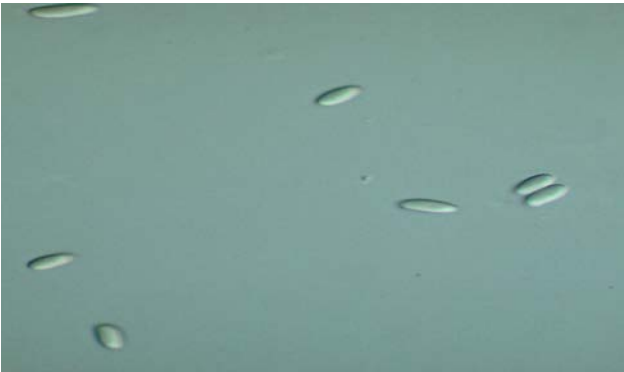
Pore surface



Inner pore surface showing tubes



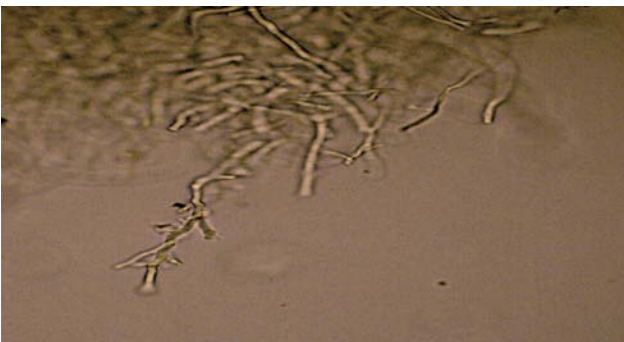
Cystidioles at 200x



Spores at 400x



Skeletal hyphae at 200x



Binding hyphae at 200x

Cryptoporus volvatus profile, page 2 of 2
Mycological Herbarium NCSC

Last update: 22 June, 2009 by S.E Thomas
Last review: 13 June, 2009 by L.F. Grand